

2024

THAAKAT FOUNDATION

HEALTHCARE WITHOUT BORDERS



TABLE OF CONTENTS

1	Letter from the Global Project Manager
2	Top 5 Treated Diseases 2024
3	Total Cases and Births 2014-2024
4	Total Cases and Births 2014-2024
5	Malaria Cases 2024
6	Malaria Cases 2014-2024
7	Malaria Program 2024
8	Malnutrition Cases 2024
9	Malnutrition Cases 2021-2024
10	Facilities Timeline
11	Taninahun Facilities
12	Gobaru Facilities
13	Helebu Facilities



2024

LETTER FROM GLOBAL PROJECT MANAGER

As we close another year, we are proud to share the remarkable progress we've made together in advancing the mission of Thaakat Foundation in Sierra Leone. Your unwavering support has been instrumental in making these accomplishments possible, and we are deeply grateful for your commitment to our shared vision.

In the past year, we have achieved significant milestones, including:

- Opening a new health center and school in Helebu, bringing essential healthcare services and educational opportunities to a previously underserved community.
- Inaugurating a new school in Serabu, providing children in the region with access to quality education.
- Continuing the construction of a new health center and school in Komende Sowa, expanding our impact in rural areas.
- Starting construction of a new health center and school in Bassaleh, extending our reach to even more communities in need.
- Implementing two rounds of malaria sensitization, helping to reduce the spread of this preventable disease through community education and awareness.
- Providing one round of food relief, offering crucial support to families facing food insecurity.
- Awarding scholarships to five women, empowering them with the tools and resources to pursue their education and improve their livelihoods.
- Completing an annual audit of our previous facilities, ensuring that our work remains transparent and accountable as we continue to grow.

These accomplishments reflect the strength of our partnerships and the dedication of everyone involved in our work. Together, we are creating lasting change and improving lives across Sierra Leone.

As we look to the future, we remain committed to expanding our reach and impact. Thank you for your continued support in helping us make a difference in the communities we serve.

With Gratitude,

Priyanka Patel, Global Project Manager of Healthcare Without Borders

2024 TOP 5 TREATED DISEASES

ADULTS

- 1 Malaria
- 2 ARI/Pneumonia
- 3 STI
- 4 Genital Discharge
- 5 Skin Infection

ADOLESCENTS

- 1 Malaria
- 2 Malnutrition
- 3 Skin Infection
- 4 Typhoid Fever
- 5 Diarrhea (Watery)

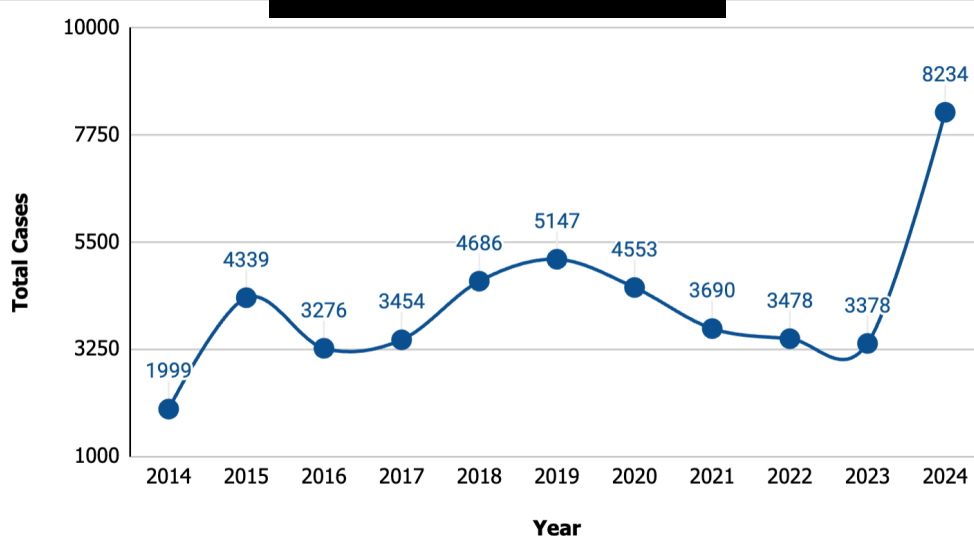
CHILDREN <5

- 1 Malaria
- 2 ARI/Pneumonia
- 3 Malnutrition
- 4 Skin Infection
- 5 Diarrhea (Watery)

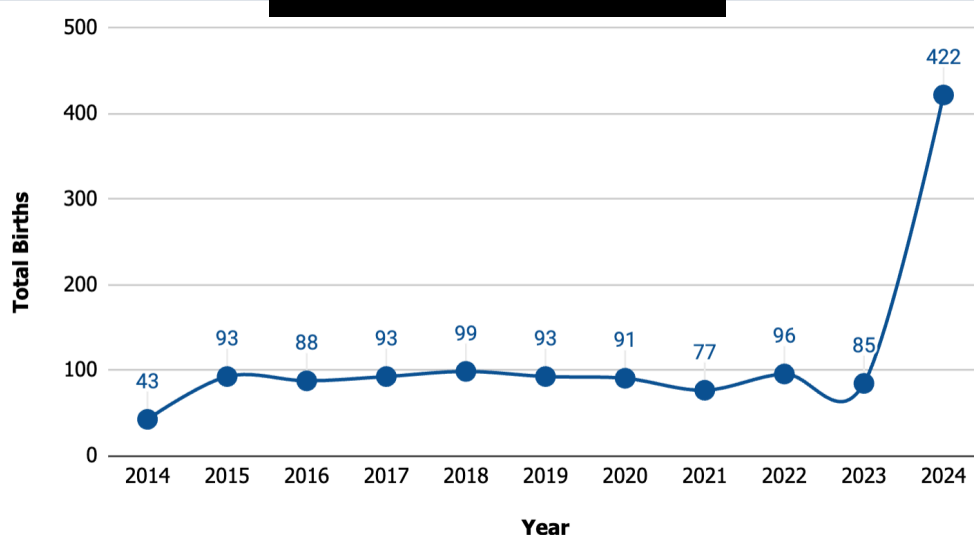
2014-2024

TOTAL CASES AND BIRTHS

TOTAL CASES



TOTAL BIRTHS



These graphs represent the total cases treated in Sierra Leone (Blama Perri, Taninahun, Gobaru, Helebu, Komende Sowa) from 2014-2024.

2024

TOTAL CASES AND BIRTHS

ADULTS

2,831
CASES



8,234
TOTAL CASES

ADOLESCENTS

1,541
CASES



422
TOTAL BIRTHS

CHILDREN <5

3,862
CASES



2024 MALARIA CASES

ADULTS

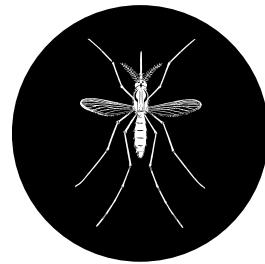
1,781 62.9%
CASES OF CASES

ADOLESCENTS

861 55.9%
CASES OF CASES

CHILDREN <5

2,068 53.6%
CASES OF CASES

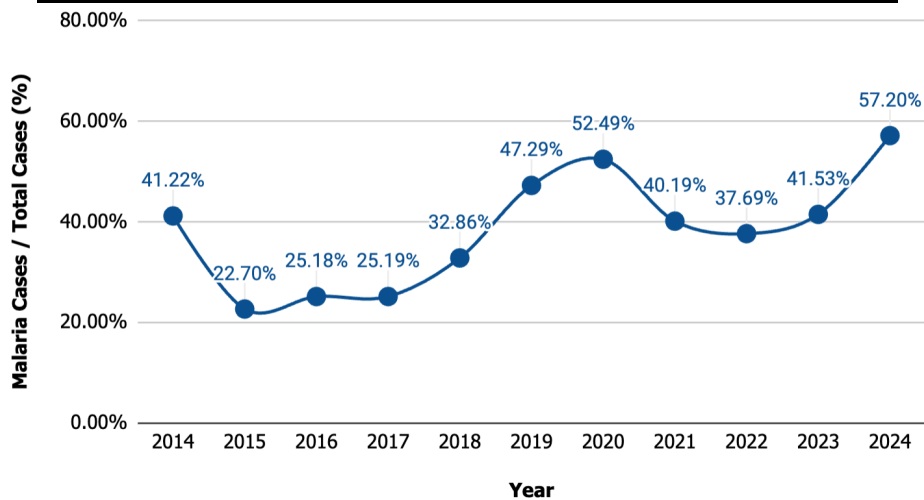


4,710
TOTAL CASES

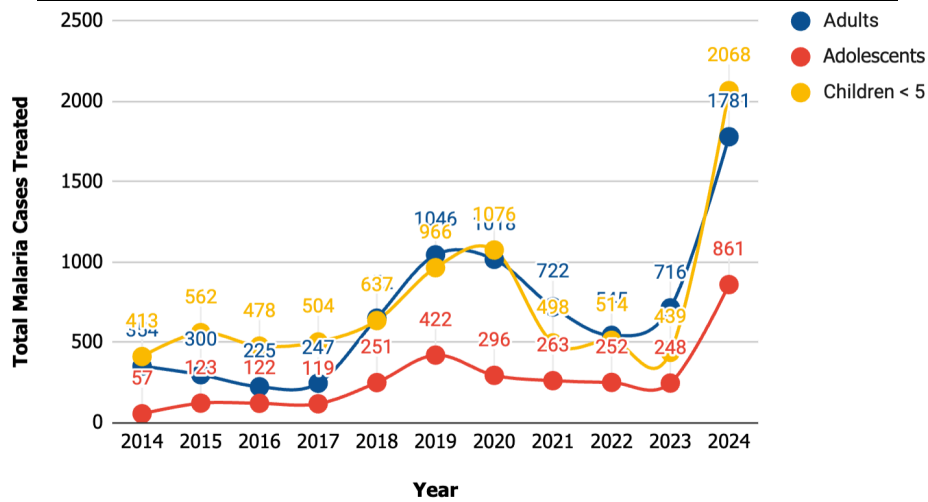
57.2%
OF TOTAL CASES

2014-2024 MALARIA CASES

TOTAL MALARIA CASES



ANNUAL MALARIA INCIDENCE



These graphs represent the total cases of malaria and the annual malaria incidence treated in Sierra Leone (Blama Perri, Taninahun, Gobaru, Helebu, Komende Sowa) from 2014-2024.

2024 **MALARIA PROGRAM**



2024 MALNUTRITION CASES

MALES

66	132
1-11 MO	1-11 MO

FEMALES

86	157
1-11 MO	1-11 MO

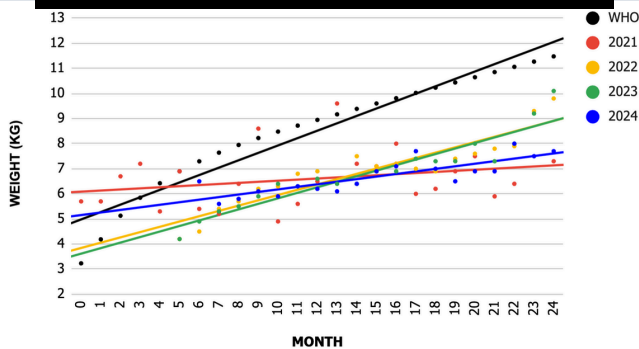


2021-2024

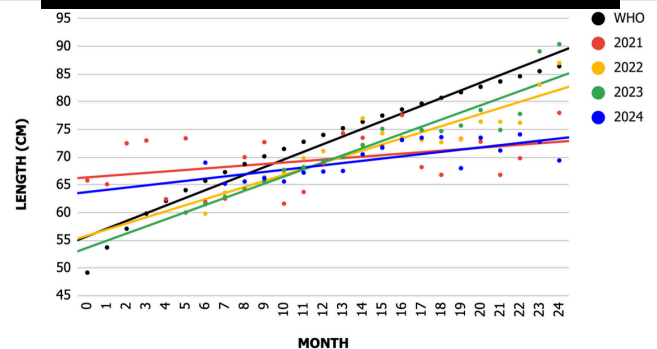
MALNUTRITION

CASES

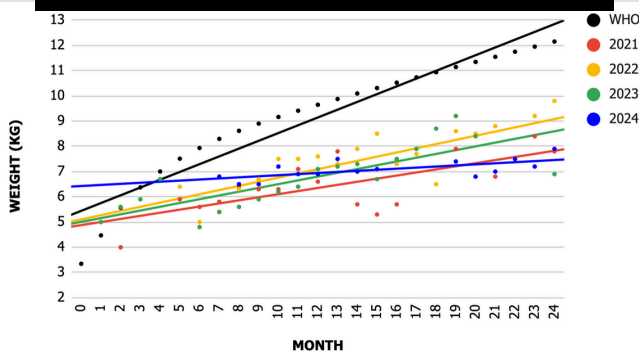
FEMALES - AVERAGE WEIGHT



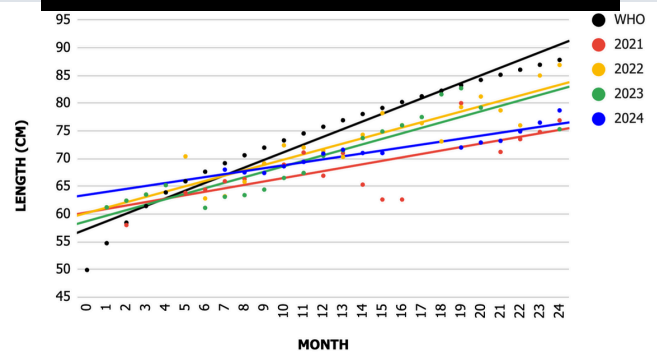
FEMALES - AVERAGE LENGTH



MALES - AVERAGE WEIGHT

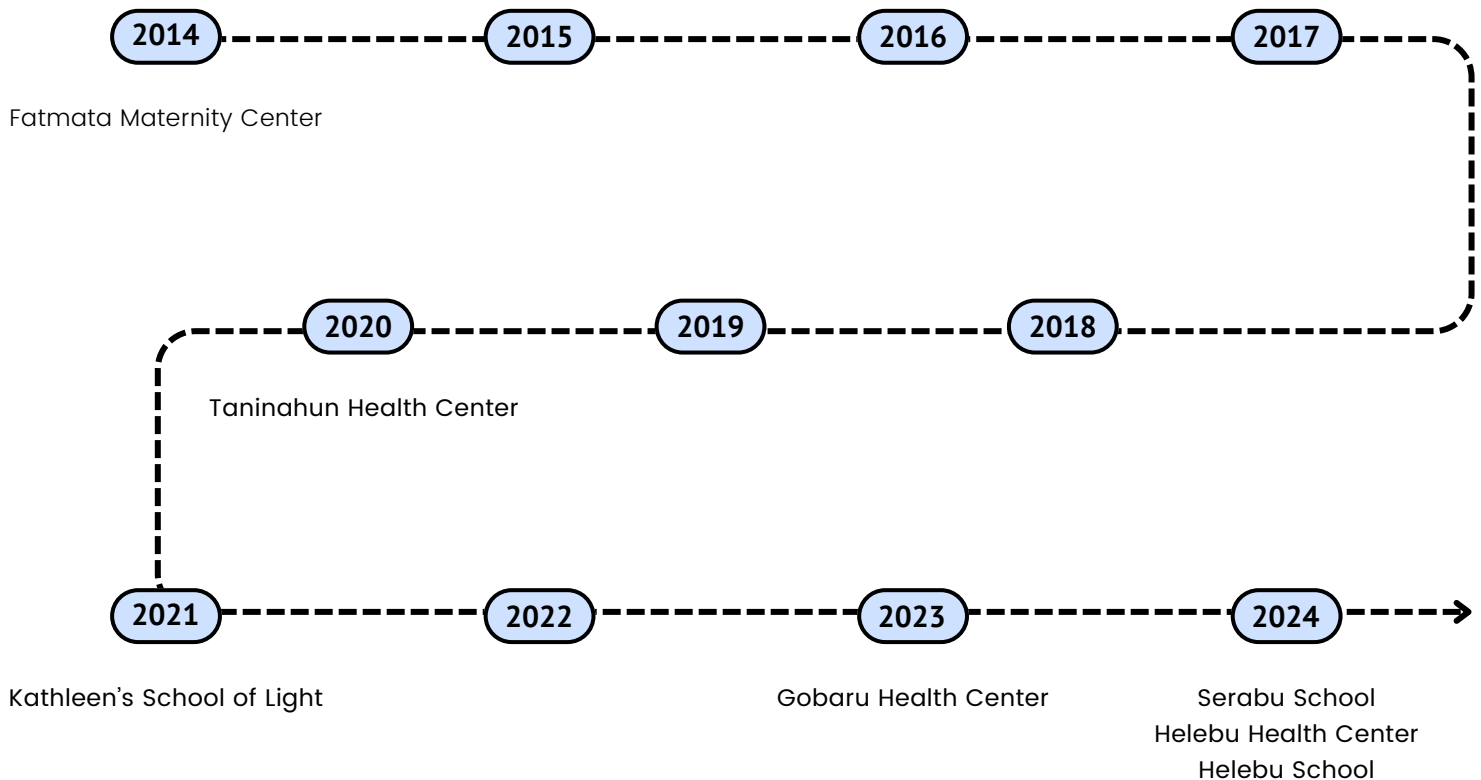


MALES - AVERAGE LENGTH



These graphs show the average weight and length in females and males enrolled in the Malnutrition Program as compared to the average standards set by the World Health Organization.

2014-2024 FACILITIES TIMELINE



2020-2024

TANINAHUN FACILITIES



2023-2024

GOBARU FACILITIES



2024 **HELEBU FACILITIES**

