

2022

HEALTHCARE WITHOUT BORDERS



TABLE OF CONTENTS

- 01** Top 5 Treated Diseases
- 02** Total Cases and Births 2022
- 03** Total Cases and Births 2014-2022
- 04** Malaria Cases 2022
- 05** Malaria Cases 2014-2022
- 06** Malnutrition Cases 2022
- 07** Malnutrition Cases 2021-2022



2022

TOP 5 TREATED DISEASES

ADULTS

- 1 Malaria
- 2 STI
- 3 Typhoid Fever
- 4 Gastric Ulcer
- 5 Hypertension

ADOLESCENTS

- 1 Malaria
- 2 Worm Infection
- 3 Dysentery
- 4 Watery Diarrhea
- 5 Typhoid Fever

CHILDREN <5

- 1 Malaria
- 2 Watery Diarrhea
- 3 ARI/Pneumonia
- 4 Malnutrition
- 5 Skin Infection

2022

TOTAL CASES AND BIRTHS

ADULTS

1,439
CASES

ADOLESCENTS

649
CASES

CHILDREN <5

1,390
CASES



3,478
TOTAL CASES

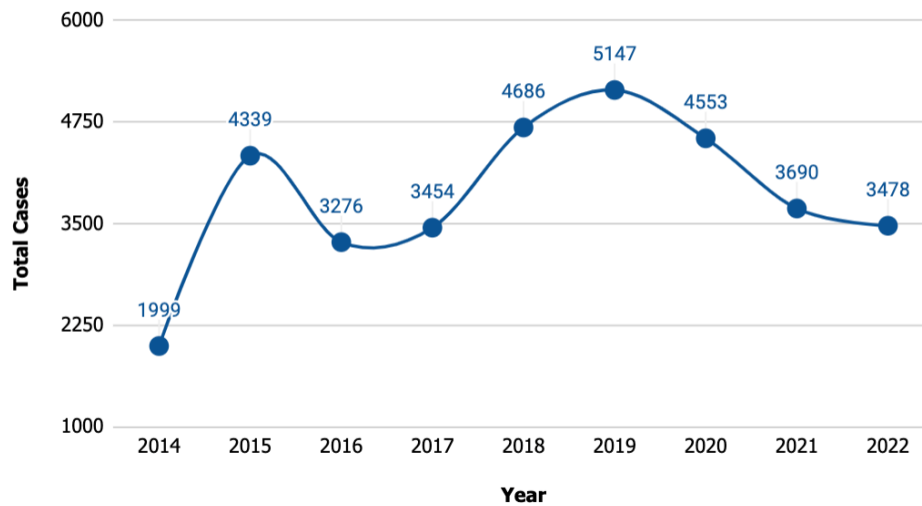


96
TOTAL BIRTHS

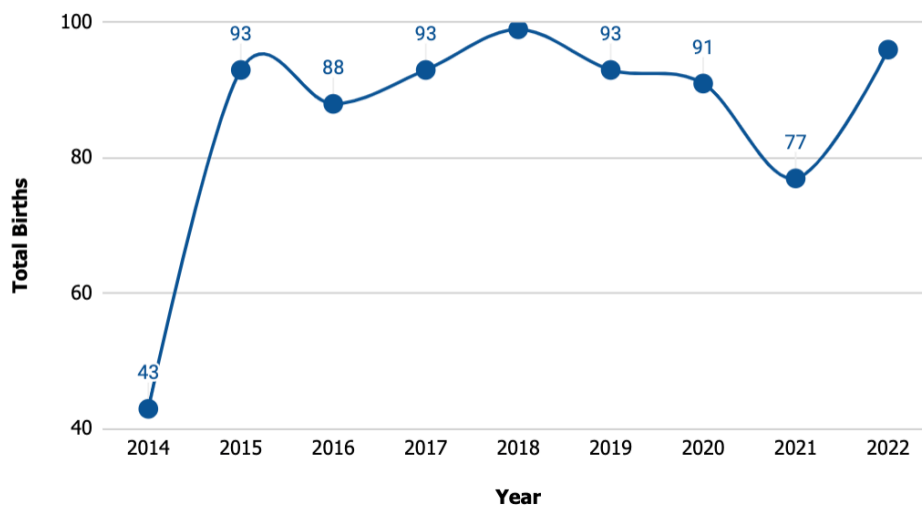
2014-2022

TOTAL CASES AND BIRTHS

TOTAL CASES



TOTAL BIRTHS



These graphs represent the total cases treated in Sierra Leone (Fatmata Maternity Center, Taninahun Health Center, and Gobaru Health Center) from 2014-2022.

2022 MALARIA CASES

ADULTS

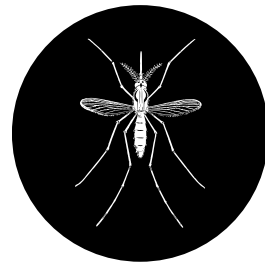
545 37.9%
CASES OF CASES

ADOLESCENTS

252 38.8%
CASES OF CASES

CHILDREN <5

513 37.0%
CASES OF CASES



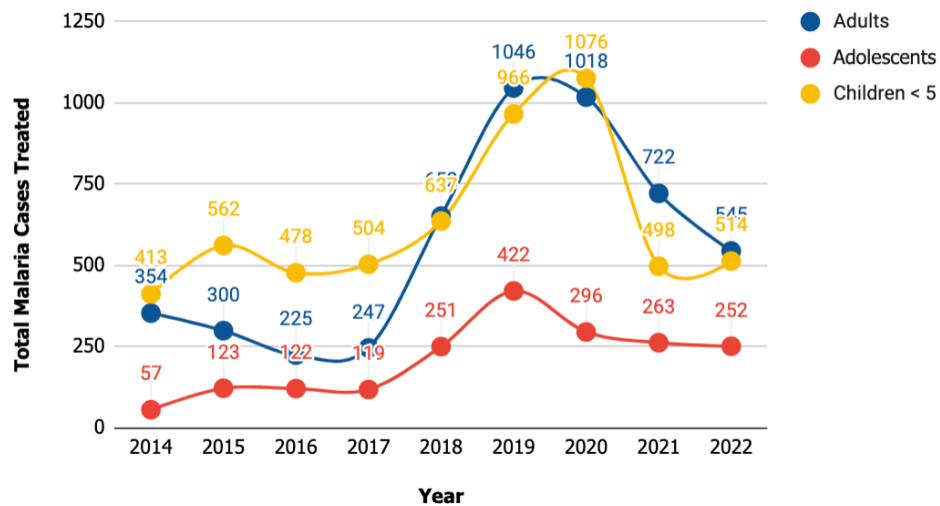
1,311
TOTAL CASES

37.7%
OF TOTAL CASES

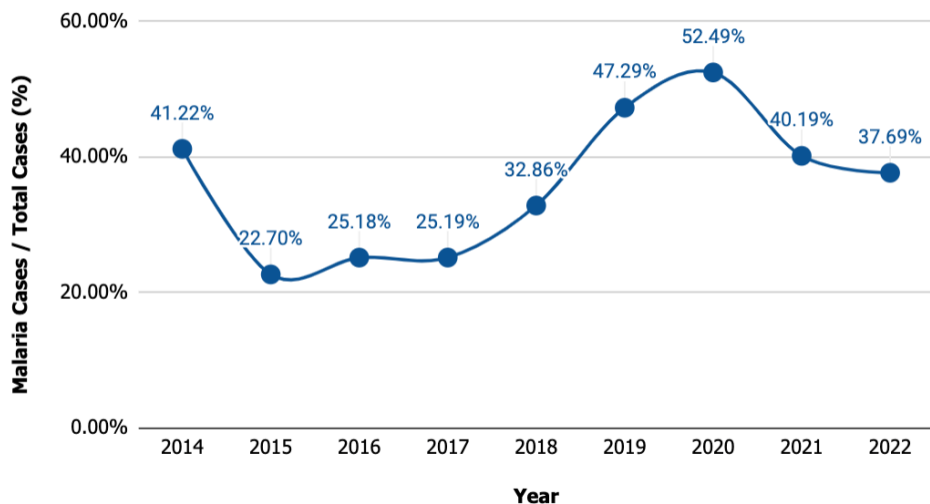
2014-2022

MALARIA CASES

TOTAL MALARIA CASES



ANNUAL MALARIA INCIDENCE



These graphs represent the total cases of malaria and the annual malaria incidence treated in Sierra Leone (Fatmata Maternity Center, Taninahun Health Center, and Gobaru Health Center) from 2014-2022.

2022 MALNUTRITION CASES

MALES

17	41
1-11 MO	1-11 MO

FEMALES

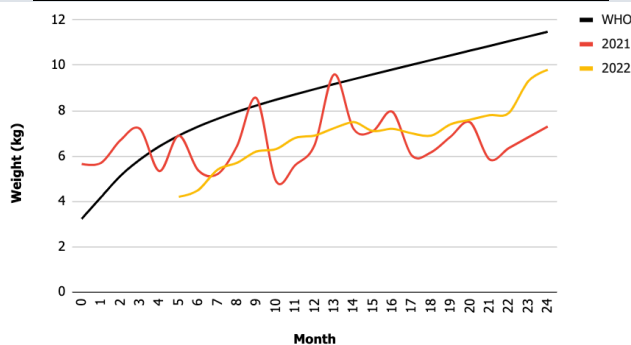
35	57
1-11 MO	1-11 MO



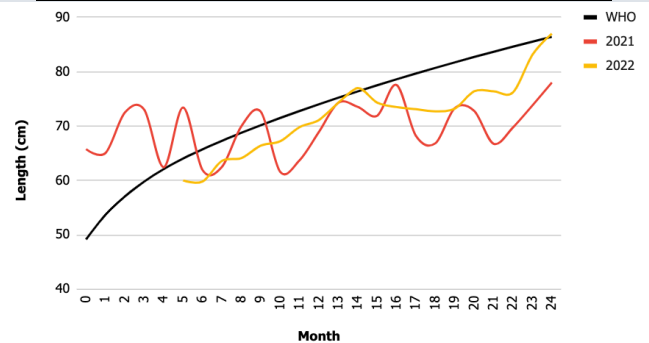
2021-2022

MALNUTRITION CASES

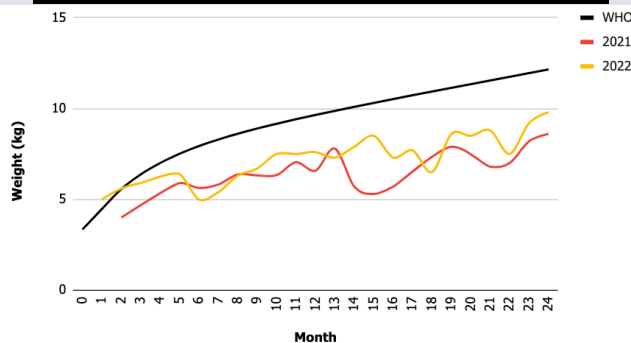
FEMALES - AVERAGE WEIGHT



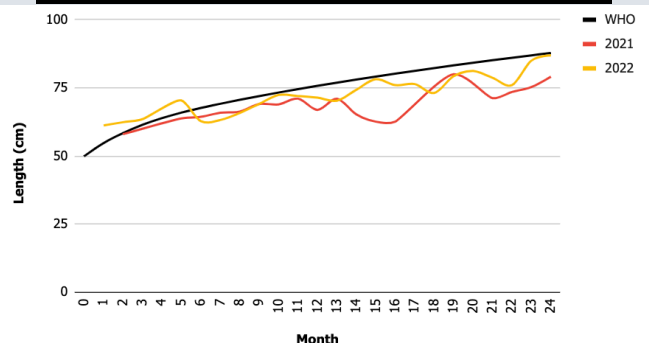
FEMALES - AVERAGE LENGTH



MALES - AVERAGE WEIGHT



MALES - AVERAGE LENGTH



These graphs show the average weight and length in females and males enrolled in the Malnutrition Program as compared to the average standards set by the World Health Organization.